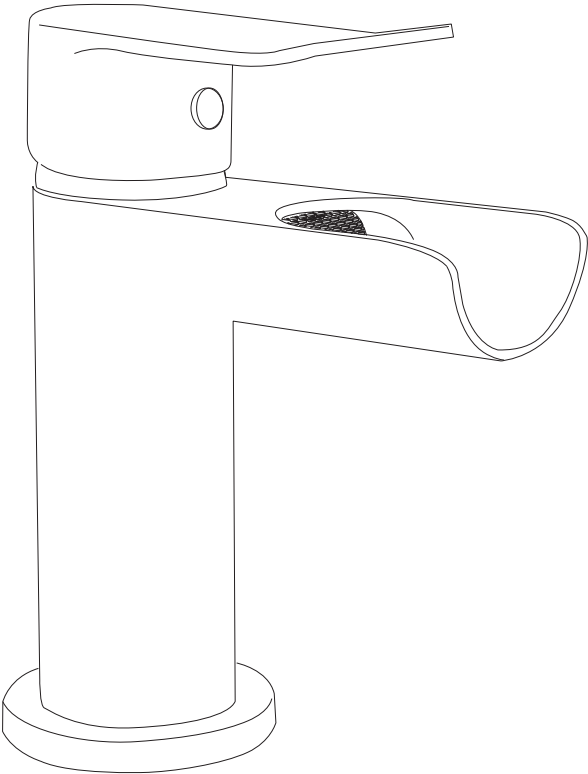
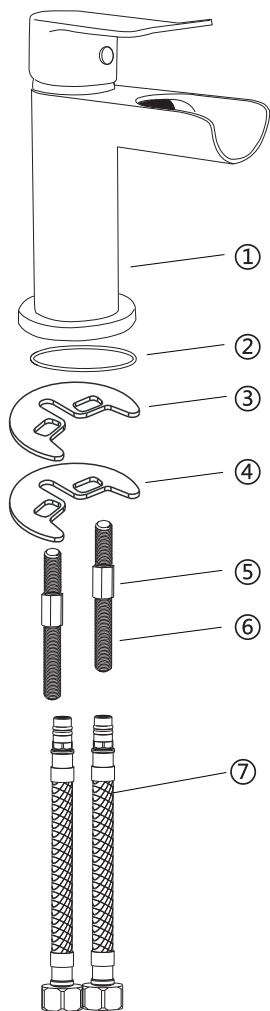
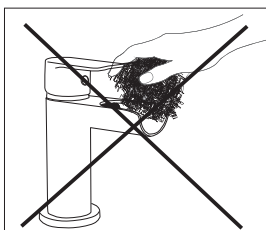
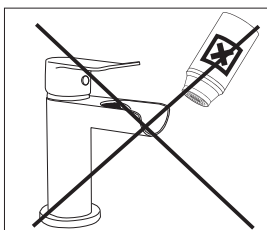
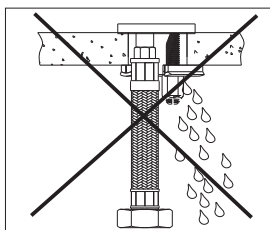
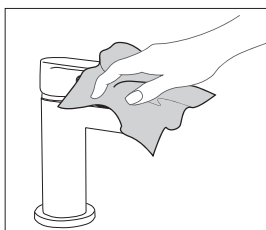
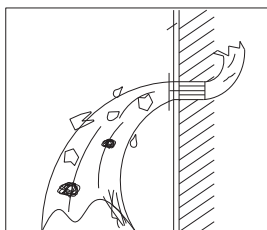


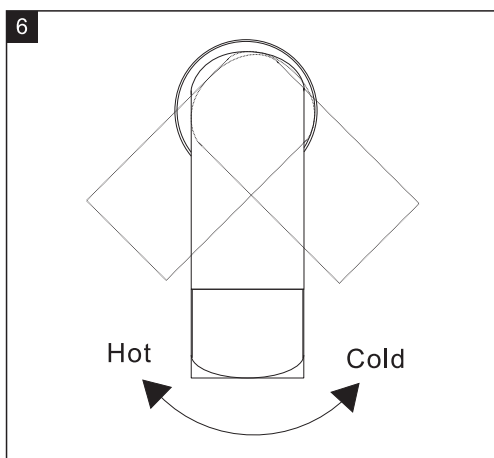
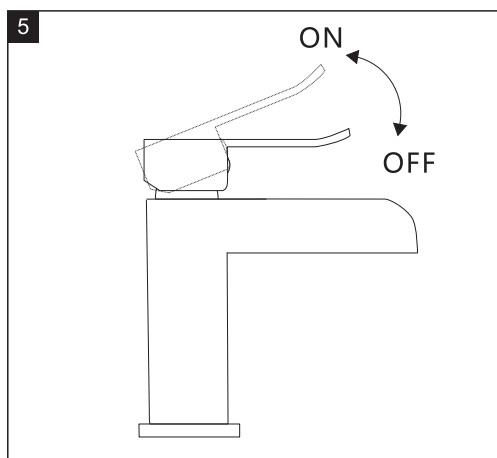
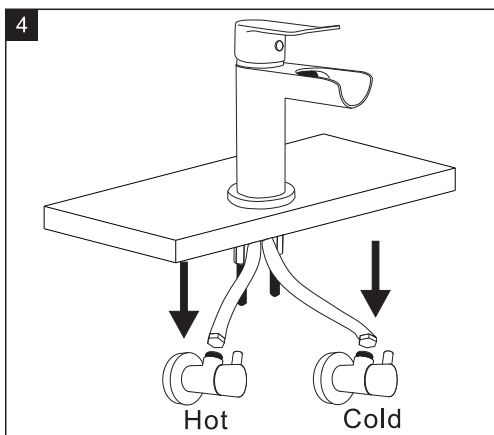
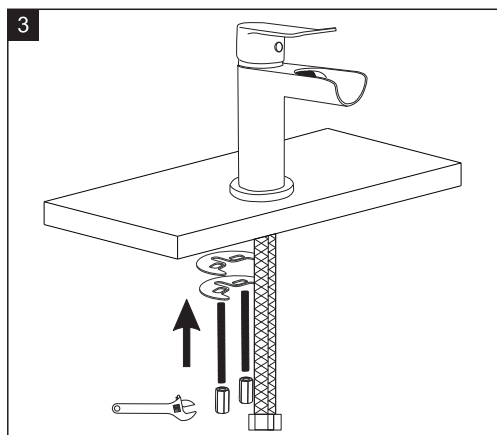
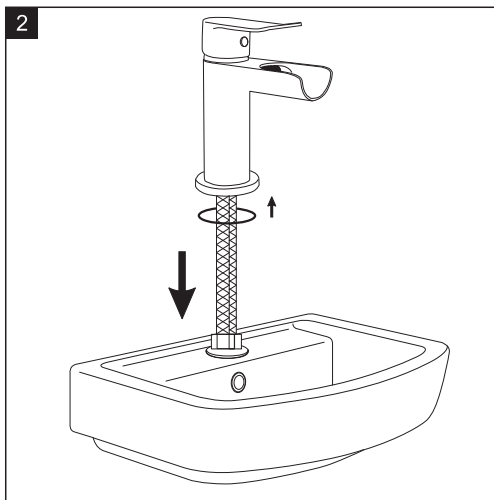
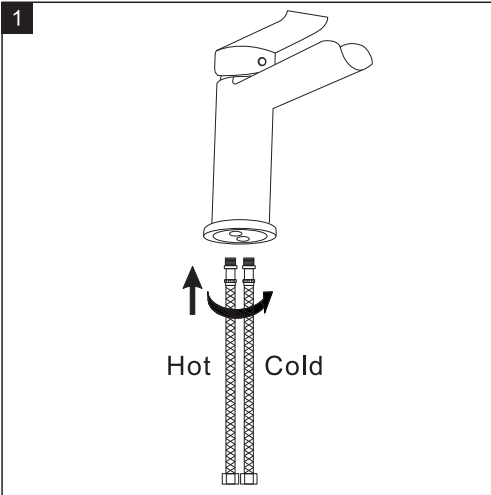
instruction for installation





①	faucet body
②	O-ring
③	rubber gasket
④	metal gasket
⑤	locking nut
⑥	thread rod
⑦	Water inlet braided pipe





Matters needing attention:

1. Open the product packing; check for all the accessories according to the accessories list.
If you lack any accessories, please contact your local supplier
2. Inlet water pressure: $0.1\text{Mpa} < \text{inlet water pressure} < 0.5\text{Mpa}$
3. Before installation, ensure that the water inlet pipeline is: hot on the left and cold on the right. And flush the pipeline with water for at least 1 minute; So as not to block the mixer after installation and affect the performance of the water outlet.
3. Check whether the water supply pipeline is damaged. If necessary, please replace it.
4. After installation, connect water to check the sealing performance of the connection to avoid water leakage before use.
5. Operating environment should be above 4°C . If below 4°C , the mixer may be deformed and frozen.
6. The disposal of scrap shall comply with the requirements of relevant local laws and regulations.

Cleaning care:

To protect the bright and clean mixer, please clean them frequently or regularly.

1. Rinse with water only and dry the mixer with cotton cloth.
2. Do not use any abrasive detergent, abrasive cloth or paper towel.
3. Do not use any detergent with acidic effect, polishing abrasive or rough detergent or soap.